

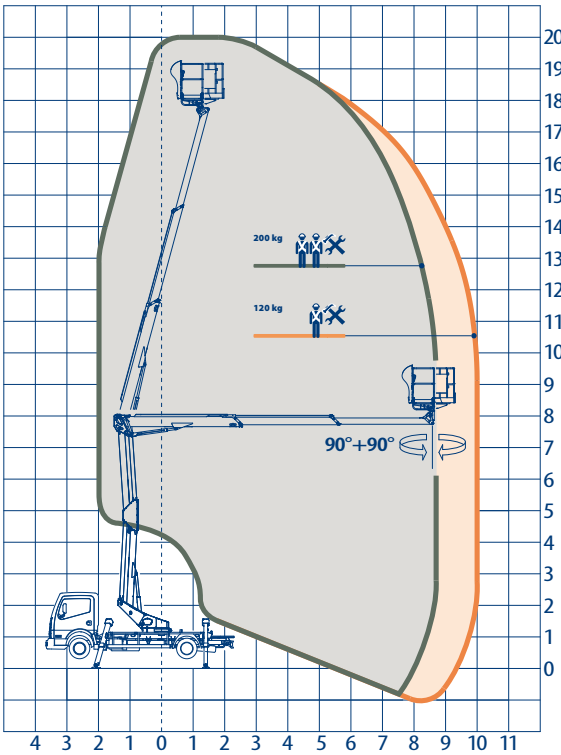
snake 2010 compact RE



**SCHULER &
SCHULER AG**
HEBE- UND TRANSPORTTECHNIK
CH-6405 Immensee (SZ) contact@schuler-schuler.ch
Telefon +41 41 854 7000 Telefax +41 41 854 7001
www.schuler-schuler.ch

NEW

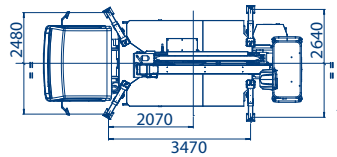
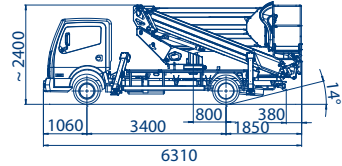
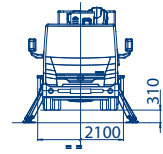




120 kg



200 kg



snake 2010 compact RE



	20 m		tipo idraulici proporzionali proportional hydraulic type tipo hidraulico proporcional hydrauliques proportionnelles hydraulisch proportional porportioneel hydraulisch type пропорциональное гидравлическое управление
	18 m		120-200 kg / 1-2 operatori 120-200 kg / 1-2 operators 120-200 kg / 1-2 operarios 120-200 kg / 1-2 opérateurs 120-200 kg / 1-2 bediener 120-200 kg / 1-2 personen 120-200 кг / 1-2 оператора
	10 m		2400 mm
	doppia barra in acciaio double bar, all steel doble barra, en acero barre double, en acier dopplebarren stahl dubbel gelaagd staal двухбалочный стальной		6310 mm
	360°		2100 mm
	1400x700x h1100 mm 1400x700x h1100 mm 1400x700x h1100 mm 1400x700x h1100 mm 1400x700x h1100 mm 1400x700x h1100 mm	alluminio aluminium aluminium alu aluminium алюминиевая	tipo ad A type A tipo A type A type A тип A
	90° dx + 90° sx 90° right + 90° left 90° derecha + 90° izquierda 90° droite + 90° gauche 90° re + 90° li 90° rechts + 90° links 90° направо + 90° налево		3,5 t